

SHOW ROUNDUP

Mol, the Belgian independent truck manufacturer, has delivered its HF5066 extra heavy haulage truck (pictured) to Hong Kong. Powered by the 542bhp Cummins ISX15 engine, the vehicle features a fully-automatic Allison six speed transmission with overdrive, five road-going ratios and one crawler gear plus two ratios in the transfer box. Including the ballast box, the truck has a kerb weight of 52t. Mol launched its bigger sibling, the HF8066, which stands 4m tall and weighs in at 80t gvw.

DAF Trucks showcased its innovation capabilities throughout its 90-year history. So its display included both the classic DAF A1600 from 1967 and a DAF CF Electric Innovation truck. The latter is a 4x2 tractor unit developed for up to 40-tonne gcw distribution applications within urban areas. The vehicle uses VDL's E-Power Technology full-electric drivetrain, comprising 210kW electric motor drawing energy from the 170kWh lithium-ion battery pack. Range is about 100km (60 miles). Trucks will enter customer testing by the end of the year. Also new on the stand were a lightweight CF 8x4 mixer chassis and a 6x2 CF with BDF frame for demountable bodies.

Volvo put an FE Electric on display. The model is a 27 tonnes gvw waste disposal truck with a body built in collaboration with Faun, the European manufacturer of refuse truck bodies. Also on show was a Volvo FH LNG, one of two models (with the FM) running on liquefied natural gas (LNG) and said to offer the same power output and the same driveability as Volvo's diesel-powered models. Engines are rated at 414 or 454bhp. The company also



publicised a new automated driving project, and had a separate area for its new Volvo Connect customer portal.

Vauxhall/Opel celebrated two world premieres with the new Combo family: the debut of the Combo Cargo LCV alongside corporate siblings the Citroën Berlingo and Peugeot Partner/Rifter, and the 4.75m-long XL version of the recently presented Opel Combo Life, which comes in crew cab and panel van versions. The latter offers room for two Euro pallets and – depending on the version – up to 4.4m³ of cargo space. Maximum payload is 1,000kg. Top of the range engine option is a 128bhp 1.5-litre diesel, now available with eight-speed automatic.

WABCO promoted its new generation of single-piston air disc brakes (ADB) for trucks, buses and trailers worldwide (see also p47 for other product news). The Maxx product is claimed to be lighter but offer improved performance. Average weight is 35kg/ADB in a 6x2 wheel

truck application. The product's design is also claimed to intelligently manage taper wear compensation to improve brake pad life. Available from 2019, WABCO's new MAXX modular platform is simultaneously available in 17.5in to 22.5in rim sizes.

Jacobs Vehicle Systems has launched a new two-step VVA (variable valve actuation) system to help OEMs enhance performance and efficiency across an engine's operating range. The system (pictured, opposite) provides the combustion engineer with the ability to optimise valve timing at two operating points instead of the traditional single-timing option when they are driven from a fixed cam. Early or late intake valve closing reduces fuel consumption and optimises compression ratio versus load. Early exhaust valve opening enables faster warm-up of the engine and aftertreatment system, and improves transient turbocharger response and emissions by keeping the aftertreatment system hot during

low load operation. Also introduced (to Europe) was Jacobs' cylinder deactivation (CDA) technology to disable the opening of the intake and exhaust valves. CDA reduces emissions by achieving higher exhaust temperatures in the operating cylinders. This makes it possible to maintain aftertreatment temperatures in low load operations.

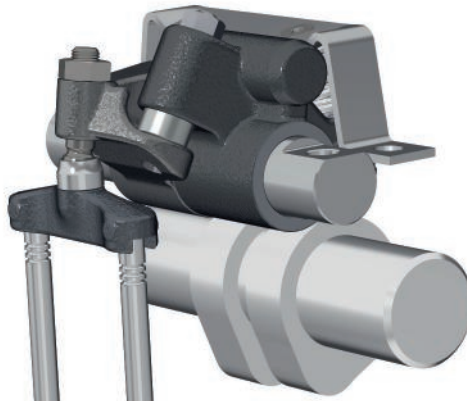
Voith demonstrated an electric drive system for buses that was originally conceptualised as a prototype for a Solaris Urbino bus. A range of more than 200km has been achieved. The liquid-cooled permanent magnet motor has a torque of 2,250Nm.

Curtiss-Wright Industrial launched its World Traction Inverter series for hybrid and pure-electric applications. Other solutions on show included a range of automatic transmission shift controls, including cable and shift-by-wire systems.

Edscha Trailer Systems has adapted its own tipper sliding roof concept so that all trailers with fixed wall structures, not just sliding-floor trailers, can now be fitted with a sliding roof.

Firestone Industrial Products Company exhibited its Firestone Airide Pro air damping technology designed for trailers. It also showed off the research behind its newest development, intelligent air springs, technology that provides data around acceleration, pressure and temperature through sensors connecting the air spring and tyre.

For German trailer manufacturer **Krone**, "we are making the trailer ready for the future with artificial intelligence and networking our products with suitable services for more mobility and more efficient logistics," says managing partner Bernard Krone. Its new Smart Trailer Check helps ensure optimum



transport conditions before the journey starts. The Smart Scan load space detection system measures free capacity in the trailer. Smart Capacity Management offers networking with freight exchanges to ensure optimum use of the free space. All of this is linked in the Krone Telematics portal.



"ACME Production Services handle equipment for concerts, events and exhibitions throughout Europe. KRONE's Dry Liner trailers give us the load security and quality we need to provide the best service in the business - 25 years and going strong!"

Lance Lovell Director, ACME Production Services.



- UK, Ireland and European specification ✓
 - 2,915mm internal height at 4m ✓
 - Cathodic dip coating plus powder ✓
 - Code XL ✓
- Short Lead Time!**

Sales office UK and Ireland: Peckfield Business Park, Phoenix Avenue, Mickletfield, LEEDS, LS 25 4DY
 Tel: +44 (0)1132 878817 | www.krone-trailer.com
 Registered office: Fahrzeugwerk Bernard KRONE GmbH & Co. KG
 Bernard-Krone-Straße 1, D-49757 Werlte, Germany





Manufacturer of compressed air products for road tanker bulk unloading **GHH Rand** (pictured), showcased customised solutions for the unloading of silo and tank vehicles.

For **Thermo King** and **Frigoblock**, highlights from the show included the first Thermo King all-electric battery-driven B-100 Eco refrigeration unit designed for small electric vehicles, as

well as new, intelligent E-200 all-electric units for vans and trucks below 3.5t gvw whose performance is independent of the vehicle.

Hella showed off its Visiotech projection technology that allows communication via lighting to optically warn other vehicles and pedestrians or to mark out certain work areas. In addition, to implement the current ECE

R48 regulation, Hella offers blinking side marker lights for trailers.

Eberspaecher demonstrated a networking platform that links components such as auxiliary battery or vehicle heater, as well as offering many additional functions to fleet managers and drivers. The new platform is operated using the Eberspaecher app. And it showed a new tunnel mixer design for emissions reduction systems.

Jost exhibited a new optimised- and weight-reduced trailer axle lift, called Jost Twin Lift, as well as the lightweight Jost JSK 34 fifth wheel that features sensors. It also showed new double-acting telescopic cylinders from the Edbro CD series, which increase the loading capacity of ejection trailers. **TE**



Uniquely effective

The S.KO COOL COMPLETE with EXECUTIVE package is our top of the range reefer semi-trailer, and includes our exclusive S.CU transport refrigeration unit. Refrigerate more cost-effectively with our outstanding insulation system. Our services and TrailerConnect® telematics system are included to ensure lower maintenance costs and an impressive resale value.

More Information: +44 (0) 1925 732886, www.cargobull.com/uk

**SCHMITZ
CARGOBULL** 
The Trailer Company.